

MUROVDAG

UT755XL / 7483 BHP /
DP2/ Platform Supply Vessel/
Fi-Fi1



GENERAL DATA

Type	Platform Supply Vessel
Design	UT755XL
Shipyard	Rosetti Marino S.p.A., Italy
Year built	2011
Class	ABS
Flag	Azerbaijan
Port of registry/Call sign	Baku/4JST
IMO	9499668

DIMENSIONS

Length overall	75.10 m
Breadth	16.00 m
Summer Load Draft	5.85 m
Draft max.	5.85 m

CARGO CARRYING CAPACITY

Gross Tonnage	2215 mt
Net Tonnage	757 mt
Deadweight	3133 mt
Deck Dimension	53 x 13.5 m
Deck Area	716 m ²
Point load	5 mt/m ²
Deck load	1600 mt

TANK CAPACITIES

Fuel oil	925 m ³ at 100%
Drill / Ballast Water	1217 m ³ at 100%
Fresh Water	856 m ³ at 100%
Base Oil	279 m ³ at 100%
Brine	794 m ³ at 100%
Dry Bulk	319.6 m ³ at 100%
Oil based Mud	993 m ³ at 100%
Sewage	18.80 m ³ at 100%
Endurance	6 days

SPEED

Maximum	14.5 kts
Economical	9.0 kts

FUEL CONSUMPTION

Maximum	25 t / day
Economical	9.8 t / day
DP mode	9 t / day

MACHINERY & PROPULSION

Main engines	GE 16V228 2 x 2790 kW (2 x 3741 BHP)
Bow thrusters	2 x 660 kW (2 x 885 BHP)
Stern thrusters	2 x 596 kW (2 x 800 BHP)
Shaft alternators	2 x 1800 kW (2 x 2413 BHP)
Diesel generator	1 x 300 kW (1x402 BHP)
Emergency generator	1 x 120 kW (1x160 BHP)
Rudders	2 Roll Royce High Lift

FIREFIGHTING

FIFI CLASS	1
Fixed system	CO ₂ : E/Room, ECR, Workshop. Hi-Fog : E/Room Water spray: Paint Store
FiFi Monitors	x 2
BA Scott (BAFOS)	x 6
EBBD	x 10
DP	DP2
DP System	Kongsberg Simrad K POS DP21 Green DPS (DPII)
DP Class	ABS DPS-2 Class
DP References Systems	2 x DGPS 1 x Hipap 1 x Radius 1 x SceneScan

LIFESAVING APPLAINCES

Life Raft	4 x 20
Lifejackets	26 pcs
Life-buoys	8 pcs
Immersion Suits	26 pcs

COMMUNICATION EQUIPMENT

2 x Inmarsat C
1 x Internal Intercom System
Radio plant according to GMDSS A3 requirements
2 x Sailor VHF RT 5020
1 x Sailor VHF C 4900 External communication according to GMDSS
3 x Sailor SP 3520
1 x Sailor 406 MHz EPIRB
1 x Fleetbroadband 500

NAVIGATION EQUIPMENT

1 x Sperry Marine VisionMaster FT 3 cm Radar
1 x Sperry Marine VisionMaster FT 10 cm ARPA Radar
1 x Sperry GPS Satellite Navigator
1 x Furuno GP-39
3 x Sperry Gyro Compass
1 x Sperry Navipilot Autopilot
1 x JRC JHS 182 AIS
1 x Sperry Marine 5100 Echosounder
1 x Sperry Naviknot 450 Speed Log
1 x JRC Weather Fax

DECK EQUIPMENT

Deck crane	1 x 5.7mt at 16m max.boom.
Tugger winches	2 x 8.7mt
Windlass/Capstans	2 x 8mt
RB	NPT60RB FRB 6 persons
DC	N/A

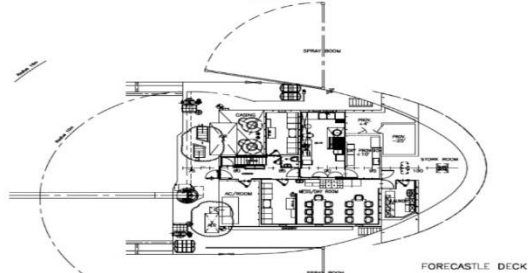
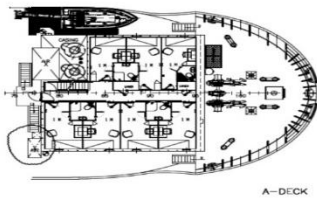
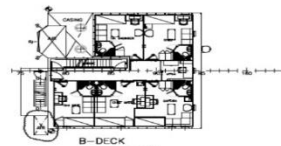
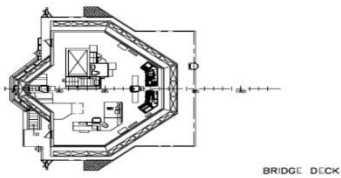
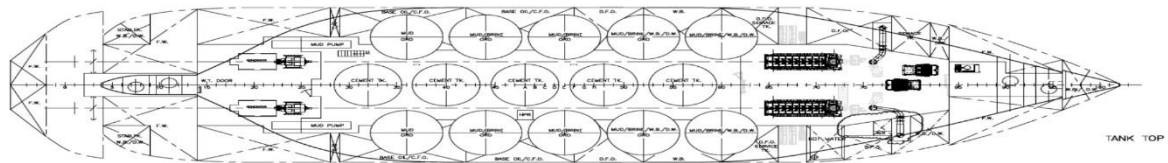
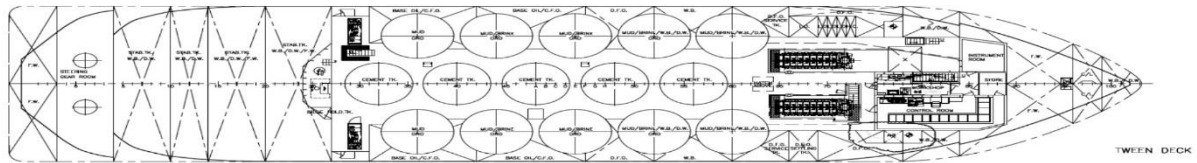
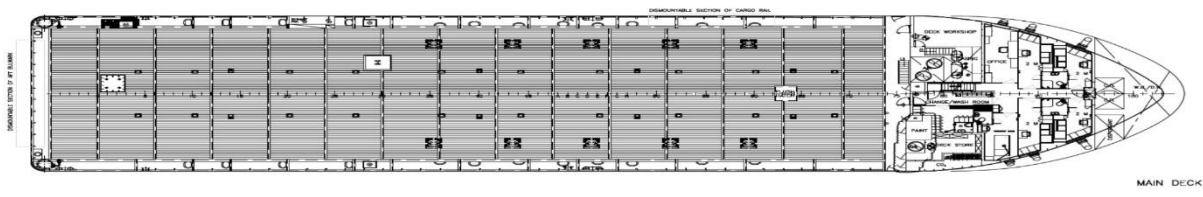
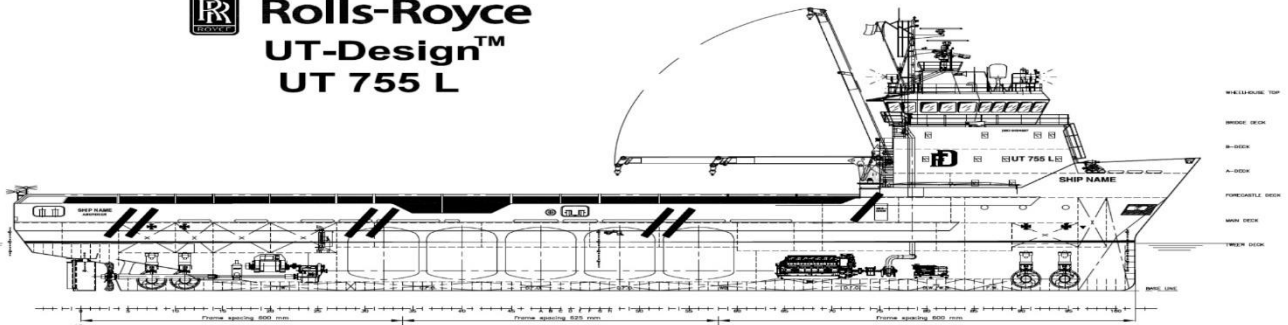
ACCOMMODATION

Cabins capacity	12 cabins x 1 man 4 cabins x 2 man
Total POB	20 persons
Crew (minimum manning)	9 persons
Crew (normal operation)	15 persons
LSE	20 persons
Hospital	x 1
Client office	N/A

UNIQUE VESSEL CHARACTERISTICS

The Murovdag is a modern (2011) Italian built PSV with DP2 capability and FiFi-1 system. The vessel has cargo deck capacity of 716 m² and a maximum load of 1600 mt. In addition the Murovdag is able to transport drill water, Pot water, Barites, Fuel, cement, Brine and Mud in dedicated tanks.

Rolls-Royce
UT-Design™
UT 755 L



38 A, N.Aliyev street
 AZ1025 Baku, Azerbaijan
 T: +994 12 464 15 31 / 32
 E: info@caspmarine.com
 W: www.caspmarine.com

