

KHOJALY

UT755XLS / 7483 BHP /
DP2/ Platform Supply Vessel/
Fi-Fi1



GENERAL DATA

Type	Platform Supply Vessel
Design	UT755XLS
Shipyard	Rosetti Marino S.p.A., Italy
Year built	2013
Class	ABS
Flag	Azerbaijan
Port of registry/Call sign	Baku/4JSR
IMO	9636266

DIMENSIONS

Length overall	82.00 m
Breadth	16.00 m
Summer Load Draft	5.060 m
Draft max.	5.830 m

CARGO CARRYING CAPACITY

Gross Tonnage	2380 mt
Net Tonnage	821 mt
Deadweight	3414.7 mt
Deck Dimension	59.8 m x 13.5 m
Deck Area	807 m ²
Point load	5 mt/m ² (min)
Deck load	1700 mt

TANK CAPACITIES

Fuel oil	880 m ³ at 100%
Drill / Ballast Water	1311.5 m ³ at 100%
Fresh Water	904,6 m ³ at 100%
Base Oil	370 m ³ at 100%
Brine	1003 m ³ at 100%
Dry Bulk	379.8 m ³ at 100%
Oil based Mud	1200 m ³ at 100%
Sewage	18.8 m ³ at 100%
Endurance	6 days

SPEED

Maximum	14.4 kts
Economical	10 kts

FUEL CONSUMPTION

Maximum	26.3 t / day
Economical	8.9 t / day
DP mode	9 t / day

MACHINERY & PROPULSION

Main engines	GE16V228 2 x 2790 kWt (2 x 3741 BHP)
Bow thrusters	2 x 660 kWt (2 x 884 BHP)
Stern thrusters	2 x 590 kWt (2 x 790 BHP)
Shaft alternators	2 x 1800 kWt 440V 60Hz
Diesel generator	2 x 375 kWt 440V, 60HZ BF 6M1015
Emergency generator	1 x 150 kWt 440V,60 HZ
Rudders	2 x Rolls Royce High Lift, max 45 degrees

FIREFIGHTING

FIFI CLASS	1
Fixed system	CO ₂ Eng Room. ECR. Workshop.
FiFi Monitors	x 2
BA Scott (BAFOS)	x 10
EBBD	x 10
DP	DP2
DP System	Kongsberg Simrad K POS DP21
DP Class	ABS DP2 Class
DP References Systems	2 x DGPS Veripos Standard 1 x Radius 1000 1 x SceneScan 1 x HIPAP 500 Accoustic

LIFESAVING APPLAINCES

Life Raft	4 x 20
Lifejackets	23 pcs
Life-buoys	10 pcs
Immersion Suits	23 pcs

COMMUNICATION EQUIPMENT

2 x Inmarsat-C
1 x Internal Intercom System
Radio plant according to GMDSS A3 requirements
4 x Motorola GP 340 – Handheld UHF
2 x Sailor VHF 6222
1 x Sailor VHF 6210
1 x Sailor VHF C 4900 External communication according to GMDSS
3 x Sailor SP 3520
1 x Sailor 406 MHz EPIRB
1 x KU Band Satellite Communications System
1 x Fleetbroadband 500
1 x Wi-Fi Thuraya Hughes
1 x Vsat ESEA Enternet+sea

NAVIGATION EQUIPMENT

1 x Sperry Visionmaster 10 cm Radar S-Band, ARPA
1 x Sperry Visionmaster 3cm Radar, X-Band, ARPA
1 x Sperry GPS Satellite Navigator
3 x Sperry Navigat Gyro Compass
1 x Sperry Navipilot Autopilot
1 x JRC JHS 182 AIS
1 x Sperry Echosounder
1 x Sperry Naviknot Speed Log
1 x JRC Weather Fax
1 x Sperry Marine 2060 Magnetic Compass
2 x Sperry Visionmaster ECDIS
1 x IS steinsohn BNWAS

DECK EQUIPMENT

Deck crane	1 x 5.1 mt at 16m max.boom.
Tugger winches	2 x 5 mt
Windlass/Capstans	2 x 8mt
RB	1x Neptune NPT 60 RB 6 persons

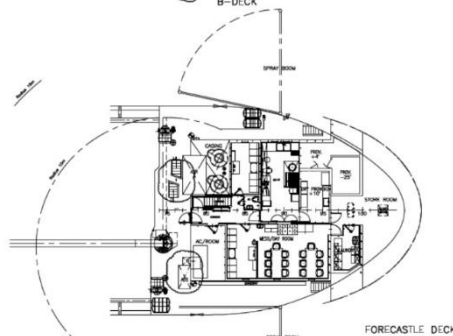
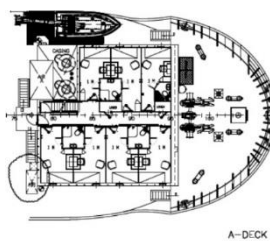
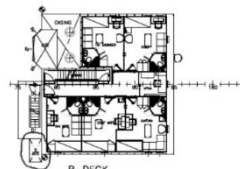
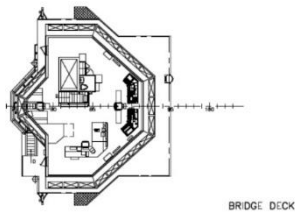
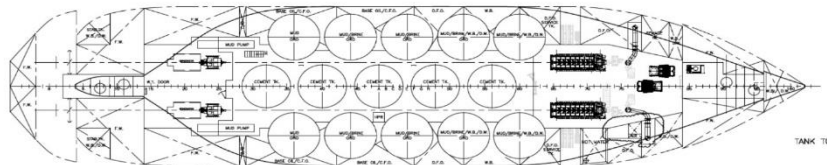
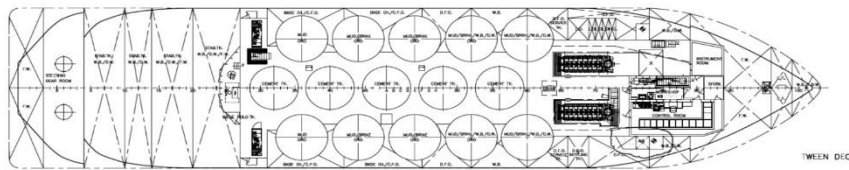
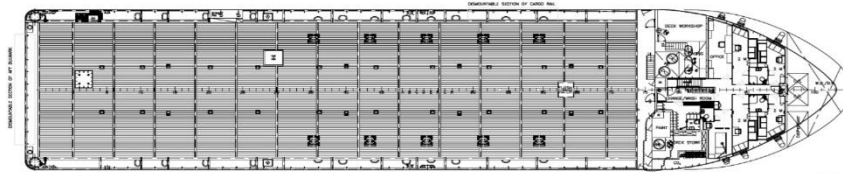
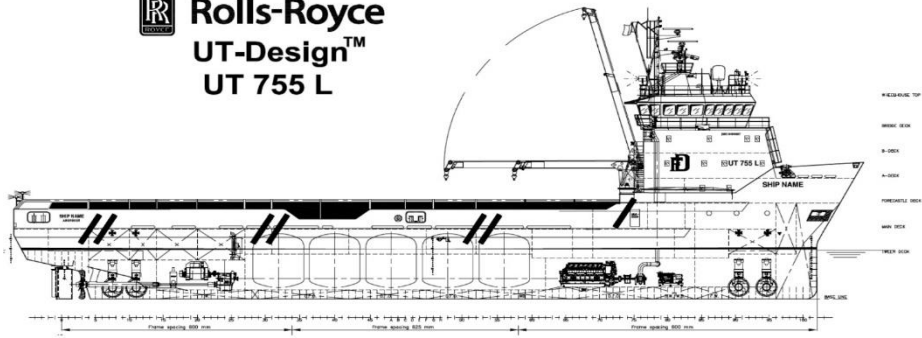
ACCOMMODATION

Cabins capacity	13 cabins x 1 man 3 cabins x 2 man
Total POB	19 persons
Crew (minimum manning)	9 persons
Crew (normal operation)	15 persons
LSE	23 persons
Hospital	x 1
Client office	x 1

UNIQUE VESSEL CHARACTERISTICS

The Khojaly is a modern (2013) Italian built PSV with DP2 capability and FiFi 1 system. The vessel has cargo deck capacity of 807m² and a maximum load of 1700 mt. In addition the Khojaly is able to transport drill water, cement, brine and mud in dedicated tanks.

Rolls-Royce
UT-Design™
UT 755 L



38 A, N.Aliyev street
 AZ1025 Baku, Azerbaijan
 T: +994 12 464 15 31 / 32
 E: info@caspmarine.com
 W: www.caspmarine.com

