

CMS-4

Cargo Barge



GENERAL DATA

Type	Flat Top Cargo Barge (M-31 type Pr. no.16801)
Year built / Place of build	2020 Baku Azerbaijan
Class	RMRS (K*) pontoon
Flag	Azerbaijan
Port of registry	Baku
Call sign	N/A
Class Registered number	180862

DIMENSIONS

Length overall	85.70 m
Breadth molded	16.50 m
Molded Depth	3.30 m
Max (Summer) Draft	1.93 m
Freeboard at Summer Draft	1.37 m
Deadweight (max.)	1684 t
Displacement	2408 t
Light Ship	723.7 t
Gross Tonnage	1200 t
Net Tonnage	360 t
Deck Cargo Capacity	1680 t
Distance between longit. cargo coamings	0.4 m
Usable deck area	12.7 x 67.2 (m²)
Height of cargo coamings	Up to 4.5 meters above the deck
Deck Strength	10.0 t/m²

CAPACITIES

Fuel Oil	2.0 m³
Sewage Water	8.0 m³
Fresh Water	8.0 m³
Endurance	10.0 days

PROPULSION

N/A

AUXILIARIES

Genset	2 x 90 kW Cummins Diesel QSB7-DM
--------	---

ACCOMMODATION

Crew cabins	2 x 2 man
-------------	------------------

COMMUNICATION

Handheld VHF	2 x SAILOR Sp3510 1 x JCom IC-m²3
E-mail	Cms4@caspmarine.com

BALLAST

Void Compartments	11 sets (17 total) tanks, numbered from forward to aft.
Ballast tanks	4 x 30 m³

PUMPS

Ballast Pump	1 x 25.00 m³ Self-Priming Centrifugal pump
Fire / Ballast Pump	1 x 25.00 m³ Self-Priming Centrifugal pump
Sewage Pump	1 x 25.00 m³ Self-Priming Centrifugal pump

LIFESAVING APPLIANCES

Life raft	2 pcs x 6 pers
Lifejackets	6 pcs
Immersion suit	6 pcs

FIRE EQUIPMENT

Portable Fire Extinguisher KY Carbon dioxide	6 x 5.0 kg
Portable Fire Extinguisher KY Foam	4 x 6.0 liter

MOORING EQUIPMENT

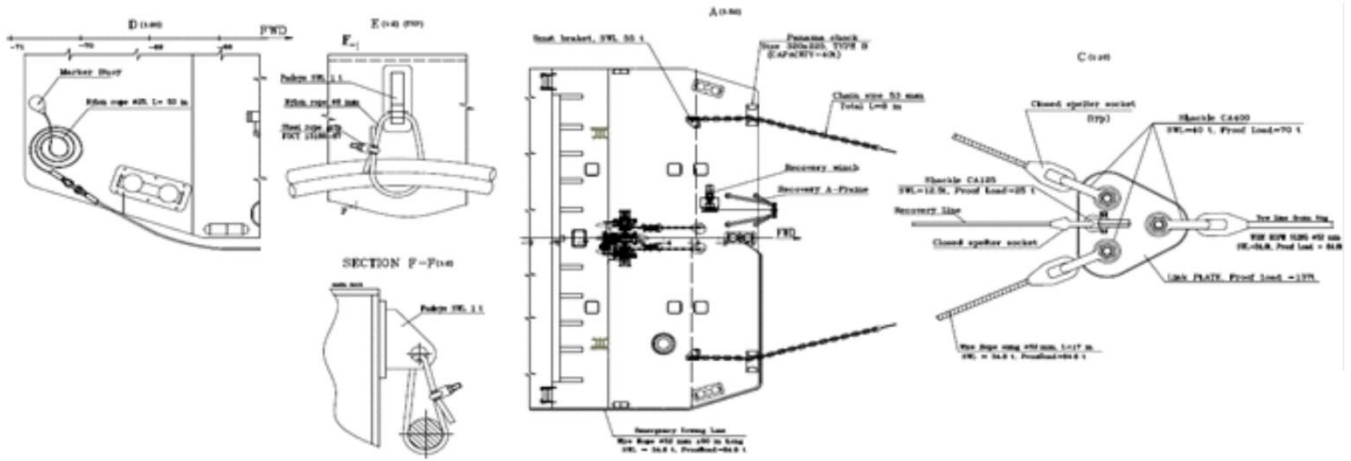
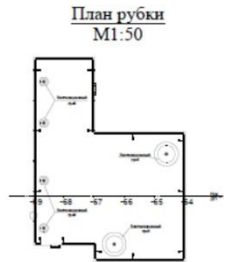
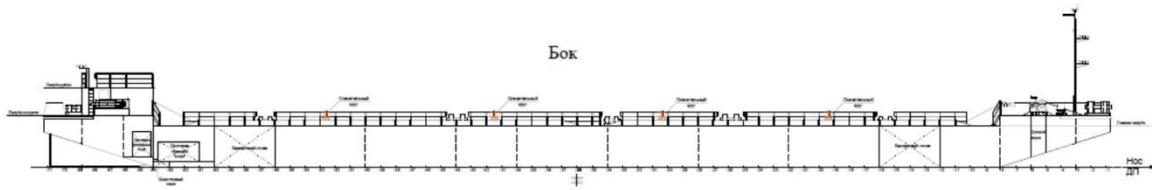
DMT Anchor Mooring Winch nominal pull	25 kN 1 x AMW 202-E28K2 chain caliber-28
Warping nominal pull	15 kN
Anchor DMT mooring Capstan nominal pull	2 x 1000 kg as per RMRS requirement additionally (1 spare) on board 100kN

TOWING EQUIPMENT

Standard towing arrangement with chains leading to a Delta plate, with 52 mm wire with MBL of 174.0 t pendant line

VESSEL SPECIFIC CHARACTERISTICS

CMS-4 is a dumb barge with a raked bow and stern with twin skegs aft. A standard twin-legged tow bridle is provided on the bow, and a series of ballast tanks (4) arranged in a port and starboard configuration allows good list and trim control during loading and unloading. The hull is strengthened to ice category L2. Main (cargo) deck has a capacity of 10.0 t/m² and can carry cargo up to 1680 t with a max CoG (Center of Gravity) of 6.0 meters above the deck.



38 A, N.Aliyev street
 AZ1025 Baku, Azerbaijan
 T: +994 12 464 15 31 / 32
 E: info@caspmarine.com
 W: www.caspmarine.com