

JURA

172T BP/ Anchor Handling
Tug Supply Vessel



GENERAL DATA

Type	Anchor Handling Tug Supply vessel
Year built / Place of build	2002/ Ferguson, Glasgow, UK
Class	(RMRs) DNV ✕ 1A1 Tug Supply Vessel SF EO DK (+) HL (2.5)
Flag	Azerbaijan
Port of registry	Baku
Call sign	4JMF
IMO number	9240275
Bollard Pull	172T (last certified 161.4T)

DIMENSIONS

Length overall	74.75 m
Breadth	16 m
Moulded Depth	7.6 m
Summer Draft	6.50 m
Freeboard at Summer Draft	1.118 m
Gross Tonnage	2544 t
Net Tonnage	832 t
Deadweight	2665 t
Deck Strength	5 t per m ² 10 t per m ² aft of frame 30

CAPACITIES

Fuel Oil	887 m ³
Fresh Water	594 m ³ (559 Cargo, 35 Domestic)
Drill Water	128.6 m ³
Ballast	895 m ³
Brine	382 m ³

Mud	418 m ³
Base oil	128.38 m ³
Dry Bulk	4 x 60.6 m ³
Deck Area	381 m ² / 28 m x 13 m
Endurance	16 days (however, STP is operational and endurance could be increased)

PROPULSION

Main Engines	2 x Wartsila 12V 32 2 x 5520 kW
Bow Thruster	2 x 735 kw CPP tunnel
Stern thruster	1 x 735 kw CPP tunnel
Bollard Pull	161.4 t
Rudders	Twin ULSTEIN high lift rudders

AUXILIARIES

Diesel Alternators	2 x 315 kw Caterpillar. C3406
Diesel Alternator	
Emergency	1 x 125 kw Gummins 6CTD8

SPEED

Maximum/Economical	16.0/10.0 kts
--------------------	---------------

FUEL CONSUMPTION PER DAY

Maximum/Economical	51/12 t
--------------------	---------

NAVIGATION EQUIPMENT

Radars	1 x Furuno 1 x VisionMaster FT
Echo Sounder	1 x Furuno
Gyro Compass	2 x 2 x Navigat X MK1 / Navigat X MK2
Auto Pilot	1 x Robertson AP9 MK3
Doppler Log	1 x JRC JLN-203
GPS	3 x Furuno
DP-0	1 x Joystick Simrad SJ01
AIS	1 x Furuno FA-150

COMMUNICATION EQUIPMENT

MF Transceiver	1 x FURUNO FS-2575C
GMDSS	Inmarsat C, Area 3
VHF	2 x FURUNO FM 8900S, 2x SAILOR RT2047 / D

LIFESAVING APPLIANCES

Life rafts	4 x 25 man
Lifejackets	49 pcs
Immersion Suits	34 pcs
FRB	6 person / 60HP

FIFI EQUIPMENT

Fixed system	Co2
BA sets	x 4

ACCOMMODATION

Cabins:	1 - Berth cabins - 4
Berth (Total)	2 - Berth cabins - 10
Crew as per Safe	4 - Berth cabin - 1
Manning Certificate	Max - 28
Crew for normal	10
Operation	16+2

MOORING & AH EQUIPMENT

Anchor winch	Brattvaag / Rolls-Royce BSL380W / 2 SL380 W
Max Pull 1st Layer	550 t
Stall	380 t
Anchors	2 x 1845 kg Pool TW
Karm forks:	Ø 450 mm
Size	(Ø65 - 125 mm)
SWL	750 t
Karm Forks inserts	1 pcs-95 mm-125 mm (3.5in- 4.5in) 2 pcs-85 mm-102 mm (3in- 3.5in) 2 pcs-75 mm-90 mm (3in) 2 pcs - 60 mm-80 mm (2.5in) 1 pcs - 65 mm (2in) (for jack-up anchor wires)
Gypsies:	2 pcs - 76 mm
Towing drum:	Ø77 mm / Ø83 mm
Port side	1880 m / 1610m
Starboard side	1880 m / 1610m

AH drum:	Ø77 mm / Ø83 mm 5490 m / 4730 m
Storage Drums: Port	
Side Drum wire capacity	1400m - Ø77 mm
Middle storage Drum wire capacity	1435m - Ø77 mm
Starboard storage Drum wire capacity	1830m - Ø77 mm
4 x Chain lockers with capacities:	Ø84 mm - 570 m Ø76 mm - 750 m Ø70 mm - 900 m
2 x Tagger winches SWL -12t.	Ø26 mm - 100 m
2 x Stern Capstans SWL-10t	Ø22 mm - 50 m

TOWING PINS

Size:	Ø500 mm
SWL	240 t

STERN ROLLER

Size:	5 m / Ø3 m
SWL	500 t

DECK CRANE

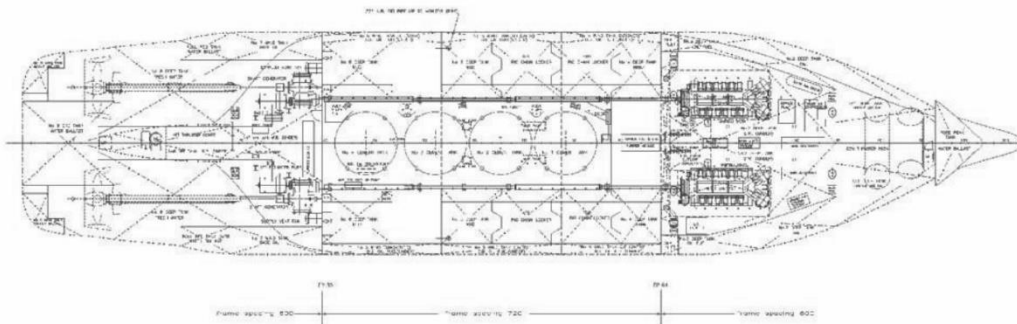
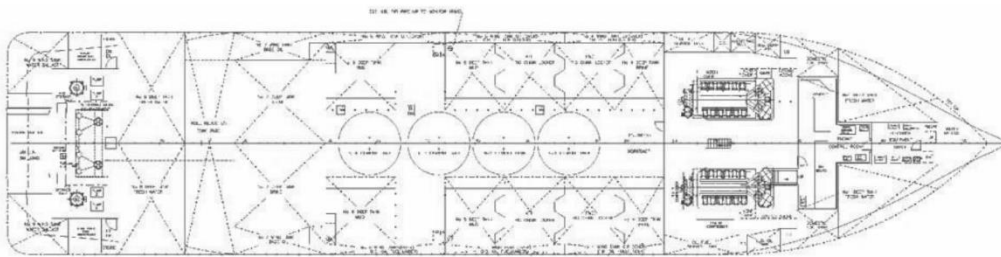
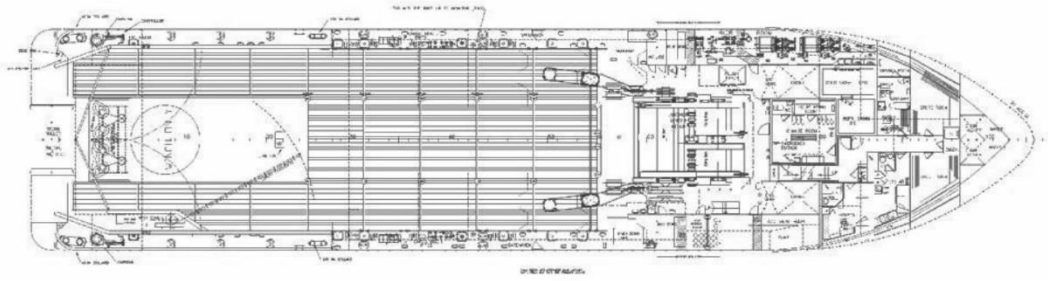
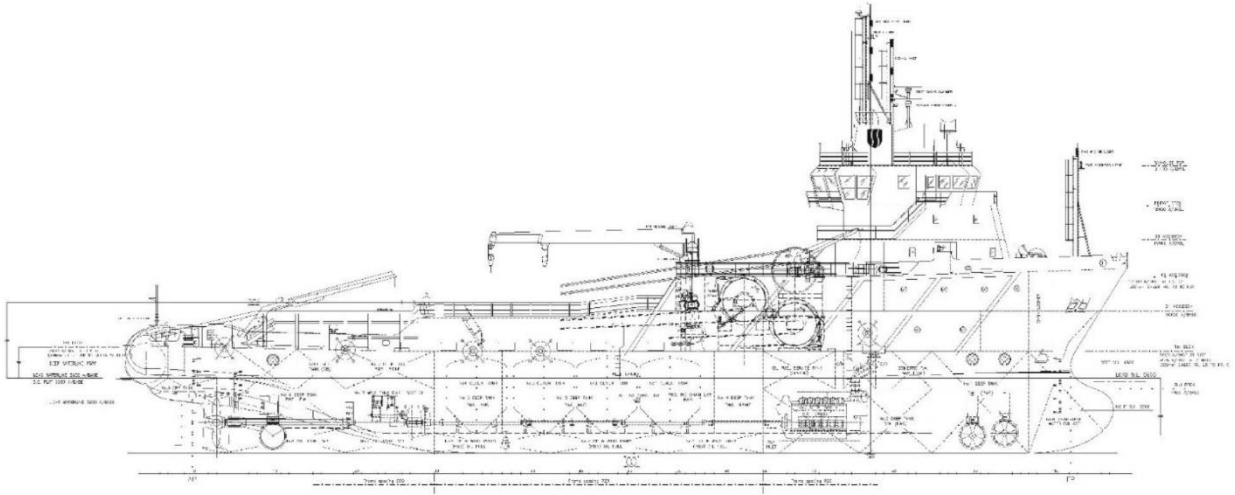
Forward CRANE	
Manufacturer	1 x TTS-Norlift AS
SWL and radius	5 t x 12 m / 2.5 t x 15.5 m

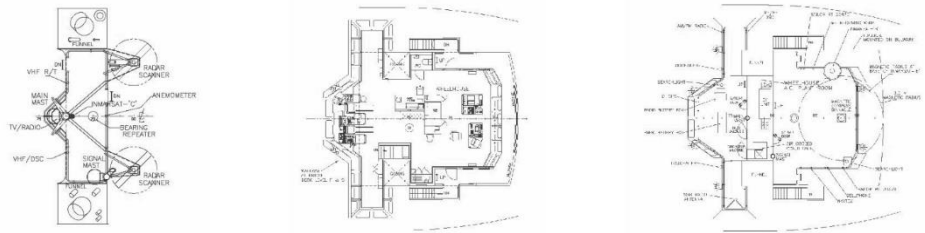
AFT CRANE

Manufacturer	Palfinger marine folding
SWL and radius	2 t x 10 m

VESSEL SPECIFIC CHARACTERISTICS

Jura is a 2002 built DPS offshore anchor-handling tug supply vessel, with 172 t bollard pull and space for over 5000 meters of 77 mm wire on the main drum, she is one of the largest AHTS's operating in the Caspian region. Specifically built for offshore operations, Jura can tow, transport containerized cargo, bulk materials (mud, cement, brine, etc.), act as an ROV platform or lay and/or recover anchors. Due to the large deck area, the vessel can launch or recover anchors whilst at the same time having other anchor line materials on board, such as buoys, chain inserts or additional anchors.

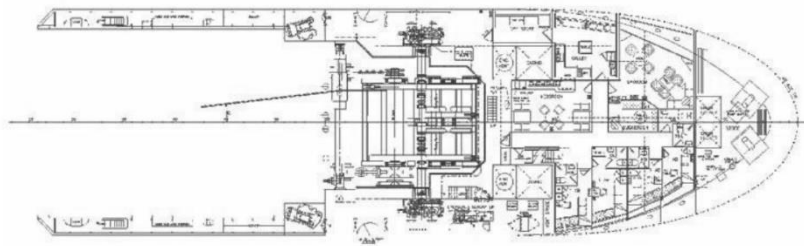




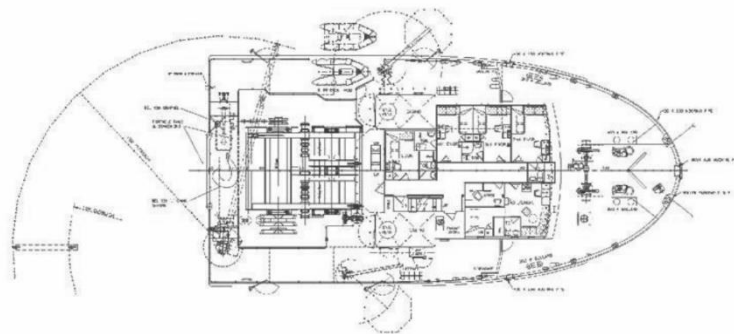
Mast platform

Bridge deck

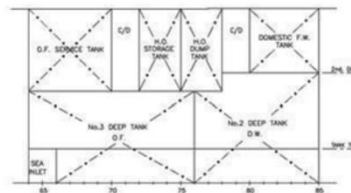
Top wheelhouse



01 Accommodation deck



02 Accommodation deck



38 A, N.Aliyev street
 AZ1025 Baku, Azerbaijan
 T: +994 12 464 15 31 / 32
 E: info@caspmarine.com
 W: www.caspmarine.com